

Part Number: UUCARABOX



\* Meterbox hose is an optional extra. Part number UUMB1FLEX (3/4" BSP X 22mm Copper). Other sizes are available.

### Application

Our post mounted meter box use the well proven BP2203UPSO-OPSO medium pressure regulator. It provides a constant 37mbar through a G4 DTI Badged meter to exit on the right hand side with a 3/4" BSPTF thread.

The box is made from PVC which fully complied with the latest BS6400-3 standard and with resistance to fire Class UL94HB (10). The door is hinged with a viewing window to ease meter reading and regulator resetting.

### Materials

- Meter Box Outer: Green PVC - UL94HB(10)
- Regulator Body and cover: zinc alloy (EN 1774)
- Regulator Diaphragm (reinforced), pads, gaskets: NBR (EN 549)
- Regulator Powder coat high resistance colour finish
- Meter to EN1359 : measuring to 6scm/hr with large , easy to read display
- Lever and butterfly handled valves to EN331 supplied with the box. The inlet valves comes complete with union for quick and easy meterbox removal

### Features

#### Connections

Inlet Connection: 3/4" BSPTF Front Right Hand Lower  
Outlet Connection: 3/4" BSPTF Left Side Outlet  
Standard triangular meter box key to open the meter box.

#### Supply pressure

The meter box is able to withstand inlet pressures up to 4 bar (60 psig).

#### Regulated pressure

The module is tested and, where required, adjusted to give an outlet pressure of 37mbar.

The content of this document is presented solely as information, as despite efforts to ensure its correctness, it should not be interpreted as an explicit or implicit cover guarantee for the products or services described or for their use or applicability. We reserve the right to change or improve product design or specifications at any moment and without notice.

### Capacity

Typically 6scm/hr for LPG 2nd stage models (when using a minimum inlet pressure of 0.45bar).

#### OPSO safety device

The Over Pressure Shut Off safety stops the gas flow in event the regulated pressure is greater than the defined value. Visual indicator displays the open-close state. Easy resetting: cap rotation allows pressure balancing. Clear marking and Sealing wire is provided.

#### UPSO safety device

The Under Pressure Shut Off safety stops the gas flow when the regulated pressure is lower than a defined value (e.g. lack of supply pressure)  
Visual indicator displays the open-close state.

#### Pressure relief valve

The BP2203 regulator is equipped with a pressure relief valve which can discharge thermal expansion and avoids unnecessary OPSO triggering. It discharges a very limited flow-rate in order to minimize discharge into atmosphere.

#### Vent

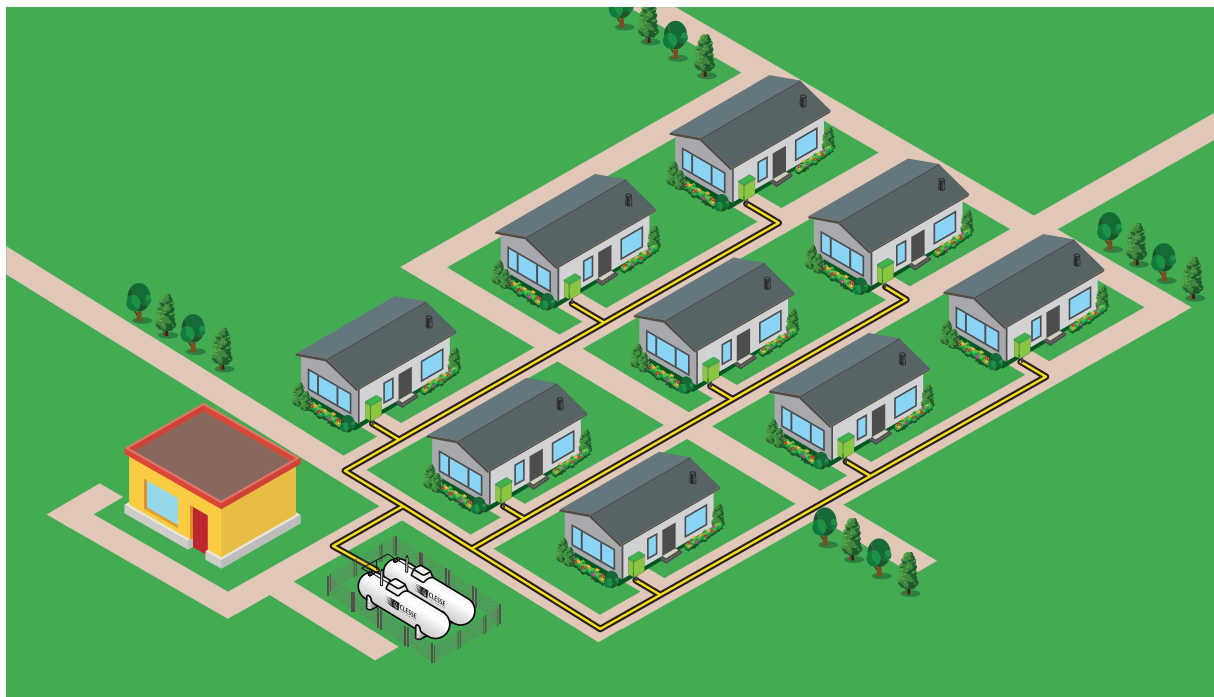
The relief valve vent is piped outside the meter box to atmosphere.

#### Accessories

A full range of accessories are available for the meter box which are shown on the overleaf.

### Conformity

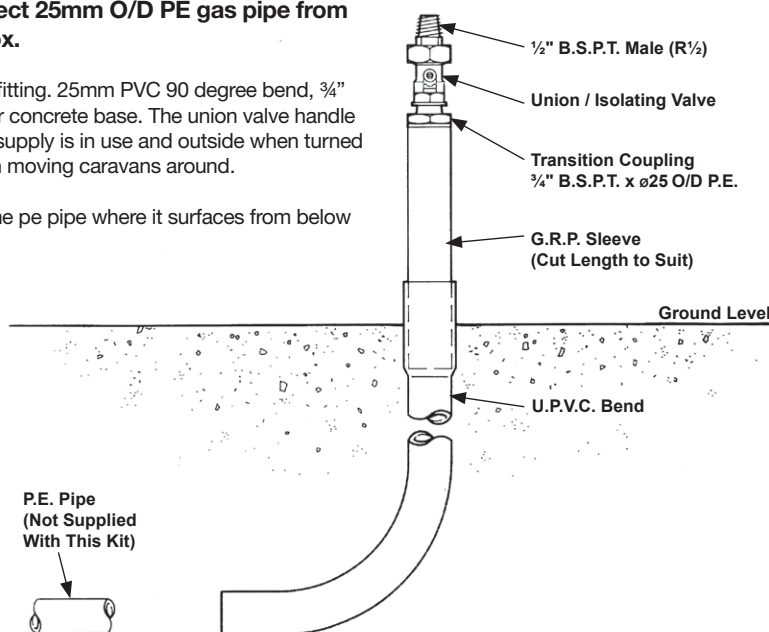
EN 13785 LPG regulators  
Pressure Equipment Directive 97/23/CE :  
classification Art 3.3 (no CE marking)  
Each meter box comes complete with a test certificate.



**The PE Connection Kit is designed to connect 25mm O/D PE gas pipe from below ground level to the caravan meter box.**

The connection comprises 25mm Primofit transition fitting, 25mm PVC 90 degree bend,  $\frac{3}{4}$ " x  $\frac{1}{2}$ " Union Ball Valve and Baseplate for fixing to your concrete base. The union valve handle is designed to fit inside the meter box when the gas supply is in use and outside when turned off. It also allows easy removal of the meterbox when moving caravans around.

A GRP anti sheer sleeve should be used to protect the pe pipe where it surfaces from below ground. A 1m length of GRP is supplied in the kit.



**We also offer our caravan meter box with the option of a central inlet connection. This keeps all of the inlet pipework in line with the box support.**